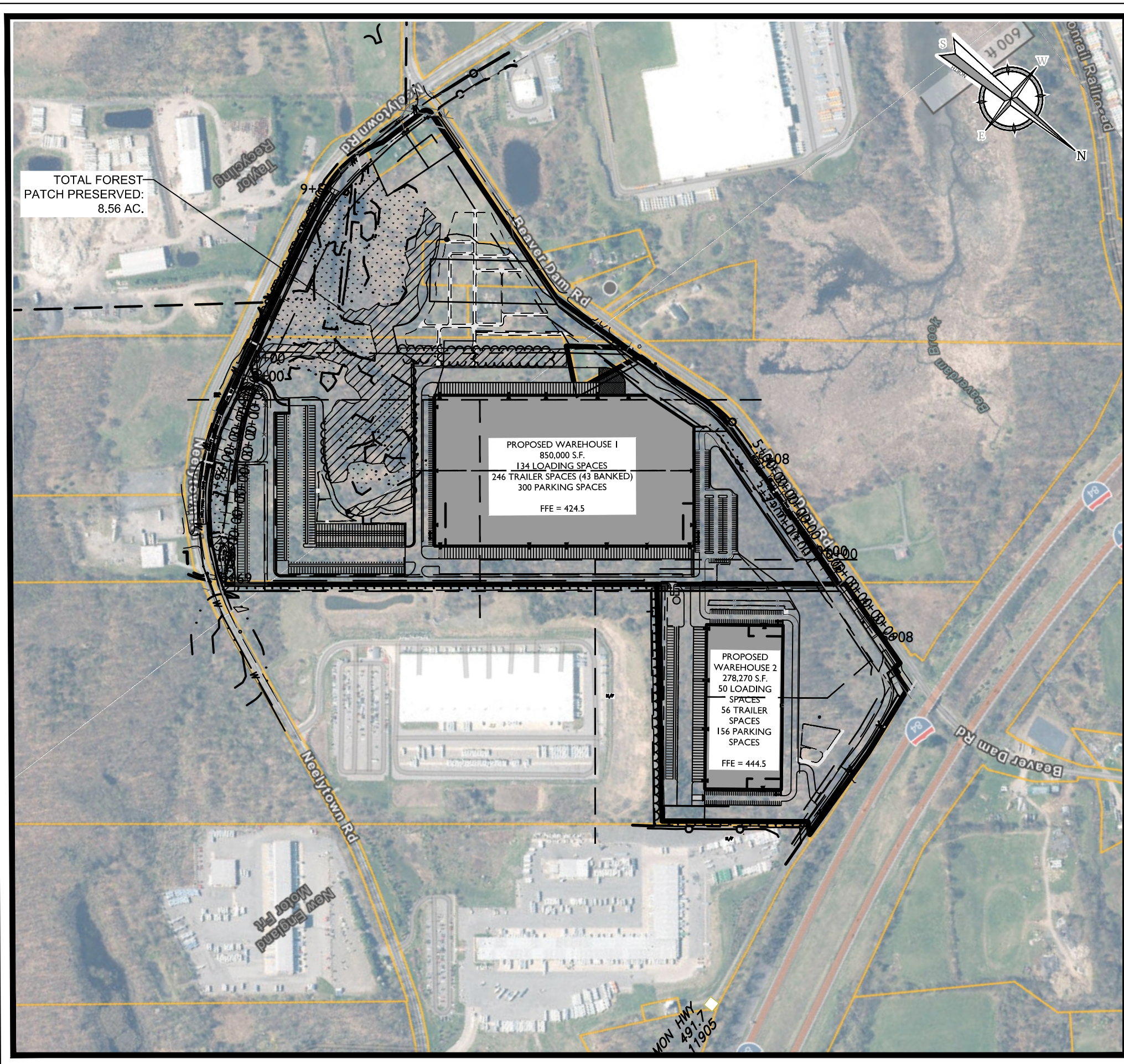


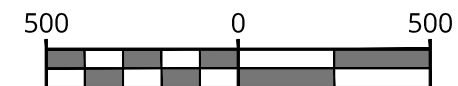
202121000327A\Engineering\Exhibits\C-EXBT-ADJT-USSES.dwg\1C-03-Forest Patch Preserved EXHIBIT By: JWAGNER



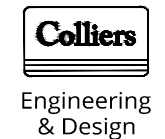
INITIAL FOREST PATCH: 46.05 ACRES
 TOTAL FOREST PATCH PRESERVED = 8.56 ACRES

LEGEND

= AREA OF FOREST PATCH PRESERVED



SCALE : 1" = 500'



www.colliersengineering.com

Copyright © 2025, Colliers Engineering & Design. All Rights Reserved. This drawing and all the information contained herein is authorized for use only by the party for whom the services were rendered or to whom it is certified. This drawing may not be copied, revised, amended, distributed or relied upon for any other purpose without the express written consent of Colliers Engineering & Design.

Doing Business as MASER

811 PROTECT YOURSELF
 ALL STATES REQUIRE NOTIFICATION OF EXCAVATIONS, DESIGNERS, OR ANY PERSON PREPARING TO DISTURB THE EARTH'S SURFACE ANYWHERE IN ANY STATE.
 Now what's below. Call before you dig. STATE REQUIRED FILE NUMBER
 FOR STATE SPECIFIC DIRECT PHONE NUMBERS VISIT: WWW.CALL811.COM

REV	DATE	DRAWN BY	DESCRIPTION



Jesse Barrett Cokeley
 NEW YORK LICENSED PROFESSIONAL ENGINEER
 LICENSE NUMBER: 09098-1
 COLLIERS ENGINEERING & DESIGN, C.T., P.C.
 N.Y. C.O.A.# 0017609

SITE EXHIBIT
 NEELYTOWN BD DEVELOPERS LLC
 36-1-33, 36-1-11.221,
 36-1-11.23, 36-1-11.212,
 36-1-11.211, 36-1-11.1,
 36-1-10.1, 33-1-91
 TOWN OF MONTGOMERY
 ORANGE COUNTY
 NEW YORK

WOODCLIFF LAKE
 300 Tice Boulevard
 Suite 101
 Woodcliff Lake, NJ 07677
 Phone: 845.352.0411
 Engineering & Design

SCALE: AS SHOWN DATE: 8/30/24 DRAWN BY: JW CHECKED BY: JF
 PROJECT NUMBER: 21000327A DRAWING NAME: C-EXBT-ADJT-USSES

SHEET TITLE: FOREST PATCH PRESERVED EXHIBIT

SHEET NUMBER: 1 of 1

UNAUTHORIZED ALTERATION OR ADDITION TO A SURVEY OR ENGINEERING MAP BEARING A LICENSED LAND SURVEYOR OR PROFESSIONAL ENGINEER IS A VIOLATION OF SECTION 7209, SUB-DIVISION 2, OF THE NEW YORK STATE EDUCATION LAW. ONLY MAPS WITH THE LAND SURVEYOR OR PROFESSIONAL ENGINEER'S SEAL ARE GENUINE TRUE AND CORRECT COPIES OF THE LAND SURVEYOR OR PROFESSIONAL ENGINEER'S ORIGINAL WORK AND OPINION.