

REV	DATE	DESCRIPTION
1	9/3/24	REVISED PER UPDATED SITE LAYOUT.
2	11/8/24	REVISED PER DEIS COMMENTS.
3	3/28/25	REVISED PER FEIS COMMENTS.
4	6/27/25	REVISED PER FEIS SUBMISSION.
5	12/12/25	REVISED PER FEIS COMMENTS.
6	2/17/26	REVISED PER DDH & DOT COMMENTS.
7	6/19/26	REVISED PER FEIS COMMENTS.

NEELYTOWN BD DEVELOPERS LLC

PRELIMINARY/FINAL MAJOR SITE PLAN & MINOR SUBDIVISION

NEELYTOWN BUSINESS PARK DEVELOPMENT

SECTION 36, BLOCK 1, LOTS 33/11.221/11.23/11.212 /11.211/11.11/10.1 & SECTION 33, BLOCK 1, LOT 91 TOWN OF MONTGOMERY ORANGE COUNTY, NEW YORK

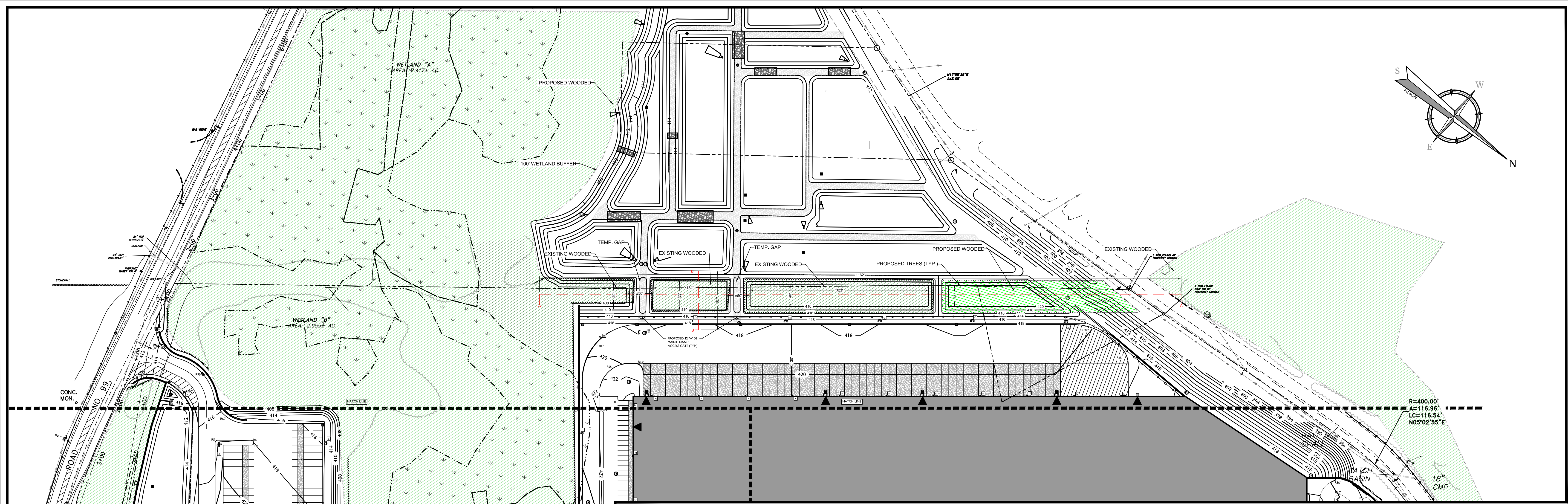


Jesse Barrett Cokeley
 NEW YORK LICENSED PROFESSIONAL ENGINEER
 LICENSE NUMBER: 090981
 COLLIERS ENGINEERING & DESIGN CT, P.C.
 N.Y. C.O.A.#. 0017609

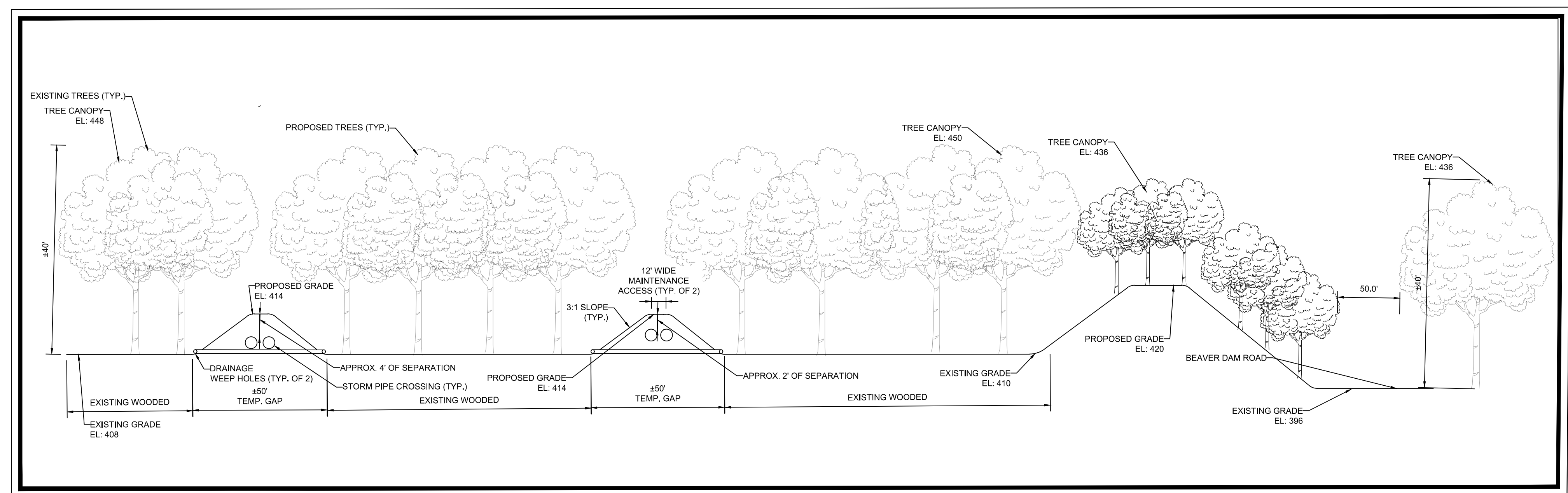
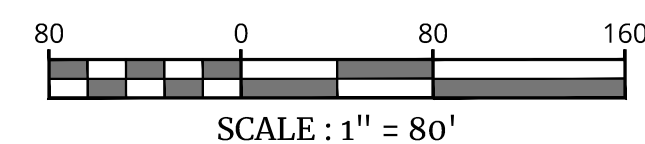
WOODCLIFF LAKE
 300 Tice Boulevard,
 Suite 101
 Woodcliff Lake, NJ 07677
 Phone: 845.352.0411
Colliers ENGINEERING & DESIGN
 ARCHITECTURE, LANDSCAPE ARCHITECTURE,
 SURVEYING, CT, P.C.

SCALE: AS SHOWN DRAWN BY: JG
 DESIGNED BY: JG REVIEWED BY: JBC
 DATE ISSUED: 5/12/23 PROJECT NUMBER: 21000327A
 SHEET NAME:

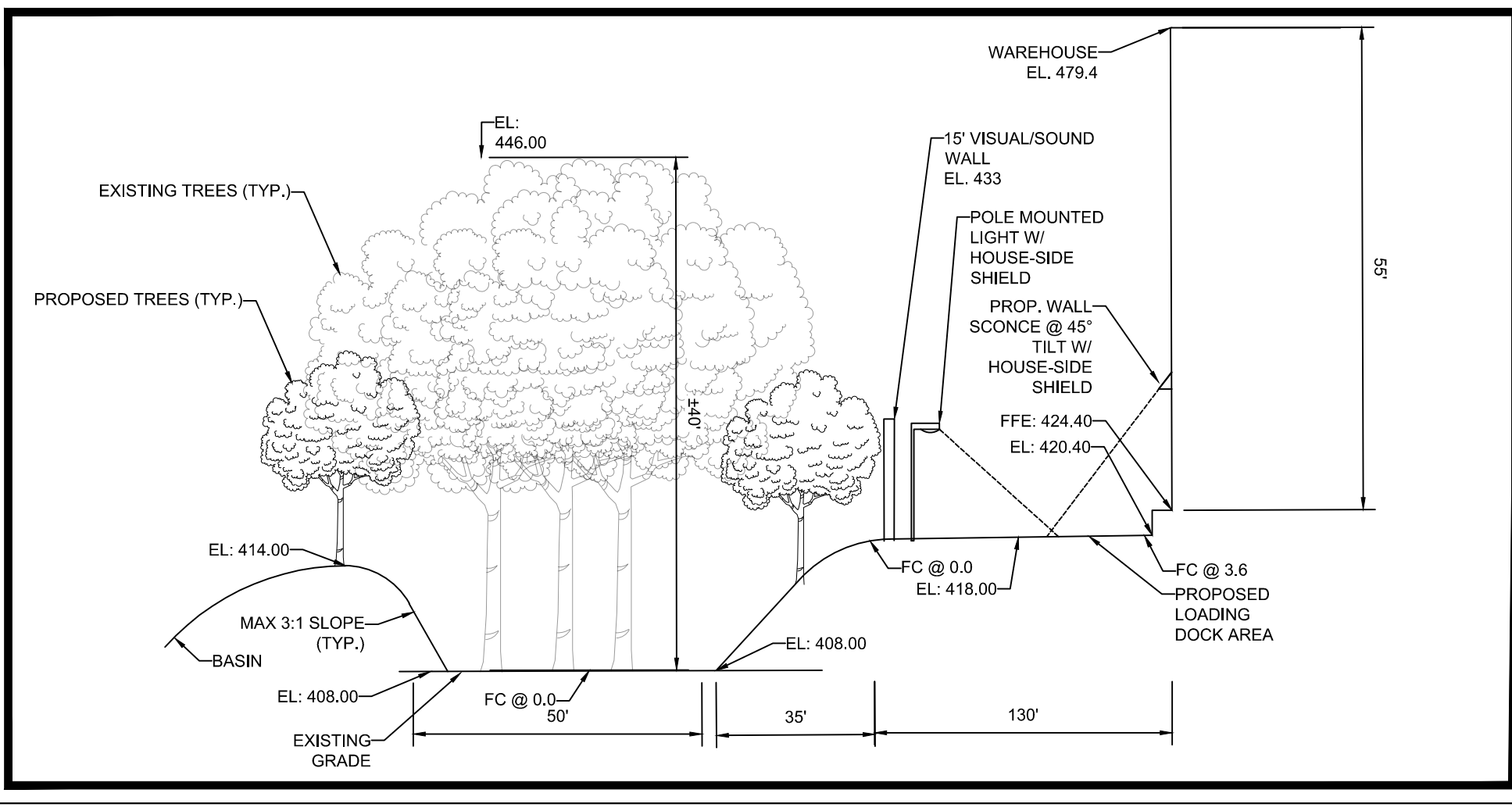
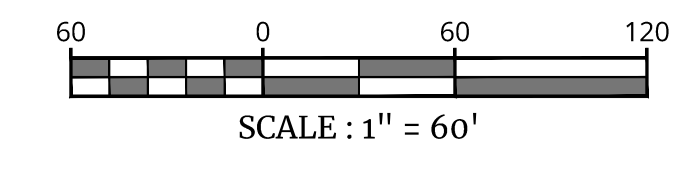
BAT CORRIDOR EXHIBIT



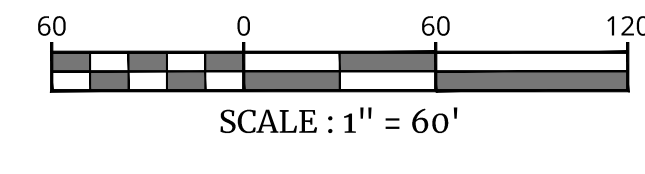
BAT CORRIDOR LAYOUT



CROSS SECTION A-A OF BAT CORRIDOR



CROSS SECTION B-B OF BAT CORRIDOR



ILSM Series Outdoor LED Area Light



OVERVIEW	
Lumen Package	9,000 - 55,000
Wattage Range	62 - 438
Efficacy Range (LPW)	115 - 162
Weight (lb/kg)	30 (13.6)
Control Options	IMSBL, ALB, ALS, 7-Pin, PCI



LUMINAIRE WITH HOUSE-SIDE SHIELD DETAIL

ACCESSORIES/OPTIONS

Integral Louver (LSL) and House-Side Shield (GS)

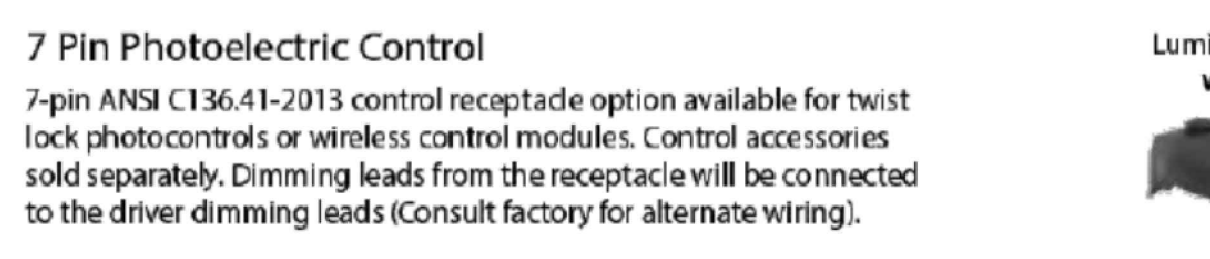
Integral louver (LS) and half louver (HLS) accessory shields available for improved backlight control without sacrificing street-side performance. The Integral Louver (LS) and Integral House-Side Shield (HLS) options deliver backlight control that significantly reduces spill light behind the poles for applications with pole locations close to adjacent properties. The design maximizes forward reflected light while reducing glare, maintaining the optical distribution selected, and most importantly eliminating light trespass. Both options rotate.

Luminaire Shown with Integral Louver (LS) Luminaire Shown with IMSBL Option



7 Pin Photoelectric Control

7-pin ANSI C136-11-2013 control receptacle option available for twist lock photocensors or wireless control modules. Control accessories sold separately. Dimming leads from the receptacle will be connected to the driver dimming leads (Consult factory for alternate wiring).



EXISTING	LEGEND	PROPOSED
---	RIGHT OF WAY LINE	---
---	PROPERTY LINE	---
---	EDGE OF PAVEMENT	---
---	CURB	---
---	DEPRESSED CURB	---
---	SIDEWALK	---
---	FENCES	---
---	TREELINE	---
---	ROADWAY SIGNS	---
---	WETLAND LINE	---
---	CATCH BASIN	---
---	DRAIN INLET	---
---	STORM MANHOLE	---
---	SANITARY MANHOLE	---
---	FLARED END SECTION	---
---	HEADWALL	---
---	HYDRANT	---
---	POLE MOUNTED LIGHT	---
---	CONTOURS	---
---	SPOT ELEVATION	---
---	TOP OF CURB ELEVATION	---
---	BOTTOM OF CURB ELEVATION	---

ANY TREES WHICH ARE DAMAGED OR DO NOT SURVIVE A ONE YEAR PERIOD, AS A RESULT OF CONSTRUCTION, THE APPLICANT WILL REPLACE WITH 1:1 PLANTING.